

EQUIPMENT  
SHARING  
PLATFORM

pro-QUIQ

EQUIPMENT  
MANAGEMENT  
SERVICES

*FixFlex Pipe Carriers*

pro-QUIQ

# Storage of 13CR/13CRS tubing - Pitting



- ✓ Common problem in Norway with pitting on 13CR/13CRS tubing
- ✓ Typically, pitting issues are where pipe has been in constant contact with the wooden bolsters / wooden pipe carriers
- ✓ Avoid use wood beams, when storing 13cr material



PO Nr:	PQ-10035												
Customer:	Pro-Quip			<b>Casing details</b>									
Work order:	1055131			Dimension:	7 5/8"			Date:	29.05.18				
Total Running length (m):	0,000			Weight:	33,7#			Ver.:	1,0				
Total Full length (m):	929,350			Grade:	13cr-80								
Total pipes (pcs):	77			Threads:	Vam Top HC								
Total centralizer (pcs.):	0			Drift dia. (mm):									
Total Stop Collar (pcs.):	0			Thread dope:	Jet Lube Seal Guard on Tally 1-8								
Makeup loss per joint (-m):				Amount of Dope(kg)									
Length marked on joint:													

Pipe no.	Tally no.	Dim.	Type	Running Length (m)	Full Length (m)	VTI Pin	VTI Box	Threads	PO	WYKK/BYFF	Heat Nr	Pipe NR	Comments
1	1	7 5/8	Tubing		12,120	OK	OK	Vam Top HC		1892	F318107	14	Pitting Body
2	2	7 5/8	Tubing		12,120	OK	OK	Vam Top HC		1892	F319120	21	Pitting Body
3	3	7 5/8	Tubing		11,650	OK	OK	Vam Top HC		1892	F319120	24	Pitting Body
4	4	7 5/8	Tubing		12,120	OK	OK	Vam Top HC		1892	F319007	19	Pitting Body
5	5	7 5/8	Tubing		12,120	OK	OK	Vam Top HC		1892	F319120	20	Pitting Body
6	6	7 5/8	Tubing		12,120	OK	OK	Vam Top HC		1892	F318107	13	Pitting Body
7	7	7 5/8	Tubing		12,130	OK	OK	Vam Top HC		1892	F319120	17	Pitting Body
8	8	7 5/8	Tubing		12,130	OK	OK	Vam Top HC		1892	F319120	22	Pitting Body
9	9	7 5/8	Tubing		12,130					1892	F319120	12	
10	10	7 5/8	Tubing		12,080					1892	F31A097	36	Pitting Body
11	11	7 5/8	Tubing		11,950					1892	F31A097	60	Pitting Body
12	12	7 5/8	Tubing		12,120					1892	F319120	45	Pitting Body
13	13	7 5/8	Tubing		12,010					1892	F318107	31	Pitting Body
14	14	7 5/8	Tubing		12,120					1892	F319120	67	Pitting Body
15	15	7 5/8	Tubing		12,130					1892	F319007	43	Pitting Body
16	16	7 5/8	Tubing		12,140					1892	F31A097	32	Pitting Body
17	17	7 5/8	Tubing		12,130					1892	F3190120	70	Pitting Body
18	18	7 5/8	Tubing		11,830					1892	F319120	42	Pitting Body
19	19	7 5/8	Tubing		11,690					1892	F318107	69	Pitting Body
20	20	7 5/8	Tubing		12,120					1892	F319120	44	Pitting Body
21	21	7 5/8	Tubing		12,130					1892	F319007	53	Pitting Body
22	22	7 5/8	Tubing		12,120					1892	F319007	52	Pitting Body
23	23	7 5/8	Tubing		12,130					1892	F319120	54	Pitting Body
24	24	7 5/8	Tubing		12,110					1892	F319120	58	Pitting Body
25	25	7 5/8	Tubing		11,840					1892	F31A097	57	Pitting Body

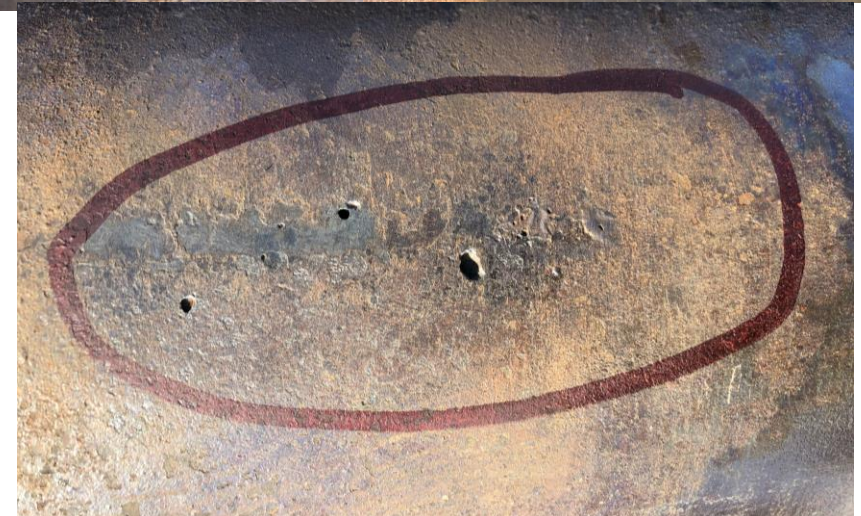


# Example 2 – Pitting 7” 13CR Tubing





# Example 3 – 7” 13CRS tubing pitting

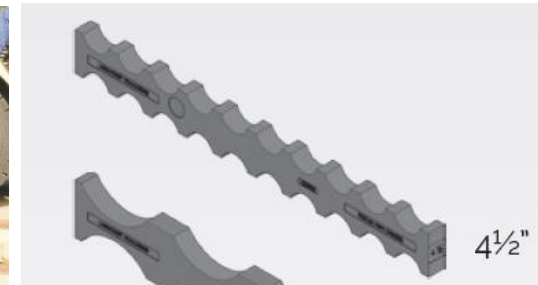




# Use plastic pipe carriers, not wooden beams



- ✓ Implement use of FixFlex / plastic pipe carriers for 13CR/13CRM/13CRS tubing
- ✓ Pipe carriers can be rented via Pro-Quip
- ✓ Stock available in Norway and Holland



# General Information – FixFlex



- ✓ The FixFlex PE pipe carriers are produced in Holland by Lankhorst Engineering Products
- ✓ The pipe carriers are thoroughly tested, beyond the failure point of wood. Approved for temperatures between -40 to +60 deg C
- ✓ The pipe carriers are used as standard by several bases and E&P companies
- ✓ More than 60000 pieces delivered since 2010



# Size overview – FixFlex



Size (inch)	Pipe positions per FixFLEX	No. of layers <sup>(A)</sup>	Total no. of pipes per stack
2 7/8	16	17	272
3 1/2	14	15	210
4	13	13	169
4 <sup>(B)</sup>	11	13	143
4 1/2	10	13	130
5	10	12	120
5 1/2	9	11	99
5 1/2 <sup>(B)</sup>	8	11	88
6	8	10	80
6 5/8	7	10	70
7	7	10	70
7 5/8	6	9	54
8 <sup>(B)</sup>	5	8	40
8 3/4	6	8	48
9 5/8	5	8	40
9 7/8	5	7	35
10 3/4	5	7	35
12	4	6	24
12 3/4	4	6	24
13 3/8	4	6	24
13 5/8	3	6	18